



Light is Vision.

NCL 150 COLD LIGHT SOURCE 120V

Part Number 17103002



Operating Manual

Volpi USA
5 Commerce Way, Auburn, NY 13021
Tel. 315-255-1737, Fax. 315-255-1202
volpi@volpiusa.com, www.volpiusa.com

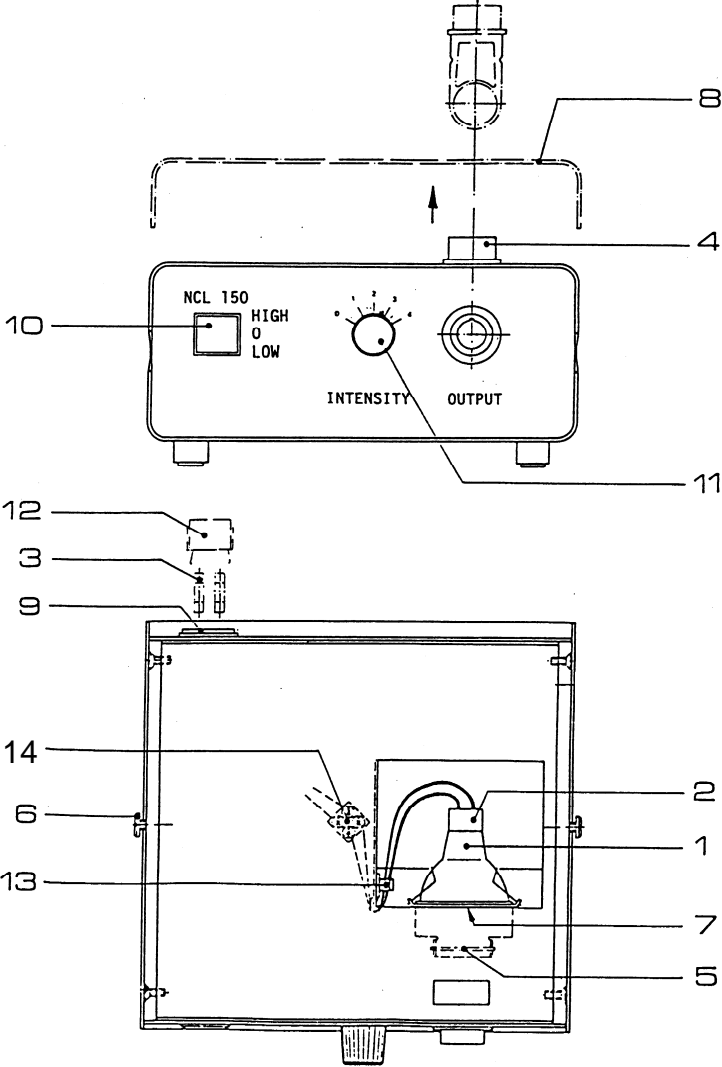
Engineering

Opto-Electronics

Optics

Fiber Optics

NCL 150 Light Source and its Components





Light is Vision.

<u>Spare Parts</u>	<u>Part Number</u>
1 Replacement Bulb	23500.014
2 Lamp Socket	25750.045
3 Fuse 2.0AT	90045.112
4 Blank Color Filter Holder	23500.032
5 IR Heat Protecting Filter	91611.907

<u>Description</u>
6 Screw
7 Lamp Holder
8 Cover
9 Power Cord
10 Switch
11 Intensity Regulator
12 Fuse Drawer
13 Cable Holder
14 Binding Post

<u>Electrical Data</u>
Line Voltage: 120V, 60Hz
Power consumption: 200W
Fuse: 2.0AT

A. Starting and Operating Instructions

1. Before operation, check that the voltage on the rear label corresponds with the local line voltages.
2. Loosen cover screws (6) and slide back cover (8).
3. Insert the Halogen Bulb (1) into the Lamp Socket (2) and push it down into lamp holder to a positive stop (7). **Do Not** touch quartz or inside of reflector!
4. Slide the Cover (8) forward and refasten cover screws (6).
5. Connect the Power Cable (9) to the unit and plug into electrical outlet.
6. Flip the Power Switch (10) to the desired intensity position HIGH or LOW. Turn the knob (11) to continuously adjust the light intensity between 0 and 4.

CAUTION!

- Air intake to the unit (on the bottom) as well as the air exhaust (at rear) should not be obstructed.
- Do not stick any articles in the unit.
- Protect against allowing moisture into the unit.

Service/Support Line

A member of our technical staff is on call to assist you with any difficulties you may be experiencing with your light source, simply call 1-800-68 VOLPI (86574) during the normal working hours of 8:00 a.m. – 5:00 p.m. Eastern Time and ask for Light Source Technical Assistance.

If we can't help you with your difficulty over the phone, we will immediately ship a comparable replacement unit out to you to use while your unit is being serviced!

Volpi USA
 5 Commerce Way, Auburn, NY 13021
 Tel. 315-255-1737, Fax. 315-255-1202
volpi@volpiusa.com, www.volpiusa.com

Fiber Optics | Optics | Opto-Electronics | Engineering

B. Fuse Replacement

1. Unplug the unit and remove the Power Cable (9).
2. Remove the two fuses by squeezing the latch on the Fuse Holder/compartment (12) and pulling the holder out of the unit.
3. Discard the old Fuses (3) and replace with 2 new fuses which match the selected voltage indicated on the back label.
4. Insert the Fuse Holder/Compartment (12) into the unit and push until the latch snaps back into position.
5. Repeat steps A 5 & A 6.

C. Halogen Bulb Replacement

CAUTION! LET LAMP COOL BEFORE TOUCHING!

1. Disconnect Power Cord (9) and remove cover according to step A 2.
2. Remove the expired Halogen Bulb (1) from the lamp holder (7) and disconnect from the lamp socket (2).
3. Repeat steps A 3 to A 6.

D. Lamp Socket Replacement

CAUTION! Replace any Lamp Socket (2) that is burned or worn out.

1. Unplug the unit and remove the Power Cable (9).
2. Repeat step A 2.
3. Remove the Halogen Bulb (1) from the lamp holder (7) and disconnect the Lamp Socket (2). Remove the socket leads from the fastener (13).
4. Disconnect the defective lamp socket (2) from the connector (14) and replace.
5. Repeat steps A 4 to A 6.

E. Specifications

- Supply Rating - 120V/60Hz/170W
- Environmental Conditions:
 - Indoor use only
 - Ambient temperature range 5°C to 40°C
 - Maximum relative humidity 80% for temperatures up to 31°C decreasing linearly to 50% relative humidity at 40°C
 - Supply voltage fluctuations not to exceed $\pm 10\%$ of nominal voltage
 - Pollution degree 2 in accordance with IEC 664
 - Installation Category II



Failure to use this equipment in the manner specified in this manual may cause the protection features of the unit to be impaired.