



Light is Vision.

V-LUX 1000 COLD LIGHT SOURCE

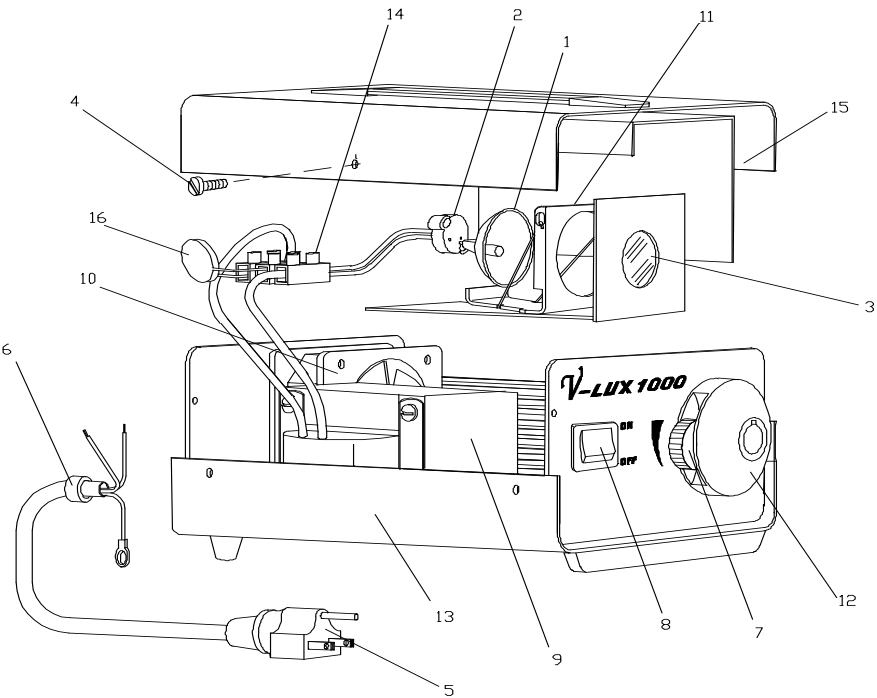


Operating Manual

Volpi USA
5 Commerce Way, Auburn, NY 13021
Tel. 315-255-1737, Fax. 315-255-1202
volpi@volpiusa.com, www.volpiusa.com

Fiber Optics | Optics | Opto-Electronics | Engineering

V-Lux 1000 Light Source and its Components





Light is Vision.

<u>Spare Parts</u>	<u>Part Number</u>
1 Halogen Lamp 20V/150W DDL.....	23500.014
2 Lamp Socket	25750.045
3 Heat Protection Filter	91611.907

Description

- 4 Cover Screws
- 5 Power Plug
- 6 Grommet
- 7 Light Intensity Adjustment
- 8 Power Switch
- 9 Transformer – Integrated Resettable Fuse
- 10 Fan
- 11 Lamp Holder
- 12 Fiber Optic Receptacle
- 13 Housing Bottom
- 14 Binding Post
- 15 Cover
- 16 Softstart - Current Limiting Resistor

A. Starting and Operating Instructions

1. Before operation, check that the voltage on the rear label corresponds with the local line voltages.
2. Loosen cover screws (4) on both sides and remove cover (15).
3. Connect Halogen lamp (1) into Socket (2) and push it down into lamp holder to a positive stop.
Do Not touch lamp envelope or the inside of reflector!
4. Replace cover (15) and refasten cover screws (4).
5. Connect the power plug (5) to outlet.
6. Turn power switch (8) on.
7. Select light intensity with light adjustment knob (7).

NOTE: For best results, please observe that the air flows freely to avoid overheating (air inlet at bottom of housing, air outlets on the rear of housing).

Unit can be disconnected by unplugging the power cord from the voltage source.

B. Lamp Replacement

CAUTION! LET LAMP COOL BEFORE TOUCHING!

1. Disconnect power plug (5) and remove cover according to A. 2.
2. Pull out used lamp (1) from lamp holder and replace lamp with a new one of same type. Further steps as per A. 3. - A. 7.

D. Lamp Socket Replacement

Caution: Replace any Lamp Socket (2) that is burned or worn out.

1. Disconnect power plug (5) and remove cover according to A. 2.
2. Disconnect lamp socket (2) from lamp (1) and binding post (14), connect new socket.
3. Follow steps A. 3. - A. 7.

E. Specifications

- Supply Rating - 120V/60Hz/170W
- Environmental Condition
 - Indoor use only
 - Ambient temperature range 5°C to 40°C
 - Maximum relative humidity 80% for temperatures up to 31°C decreasing linearly to 50% relative humidity at 40°C
 - Supply voltage fluctuations not to exceed $\pm 10\%$ of nominal voltage
 - Pollution degree 2 in accordance with IEC 664
 - Installation Category II



Failure to use this equipment in the manner specified in this manual may cause the protection features of the unit to be impaired.



Light is Vision.

Service/Support Line

A member of our technical staff is on call to assist you with any difficulties you may be experiencing with your light source.

Simply call 1-800-68 VOLPI (86574) during the normal working hours of 8:00 a.m. – 5:00 p.m. Eastern Time and ask for Light Source Technical Assistance.

If we can't help you with your difficulty over the phone, we will immediately ship a comparable replacement unit out to you to use while your unit is being serviced!

VOLPI MANUFACTURING USA CO., INC.

5 Commerce Way
Auburn, NY 13021
USA

Tel. (800) 68 VOLPI (86574)
(315) 255-1737

Fax: (315) 255-1202

www.volpiusa.com

volpi@volpiusa.com

Volpi USA
5 Commerce Way, Auburn, NY 13021
Tel. 315-255-1737, Fax. 315-255-1202
www.volpiusa.com, volpi@volpiusa.com

Fiber Optics | Optics | Opto-Electronics | Engineering

14363.781/8.10

© 2010 Volpi USA

All rights reserved